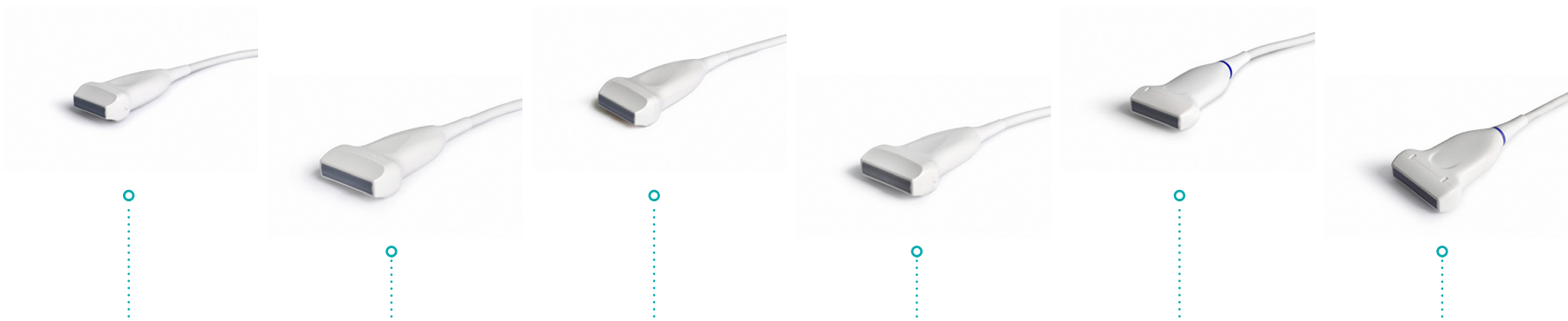
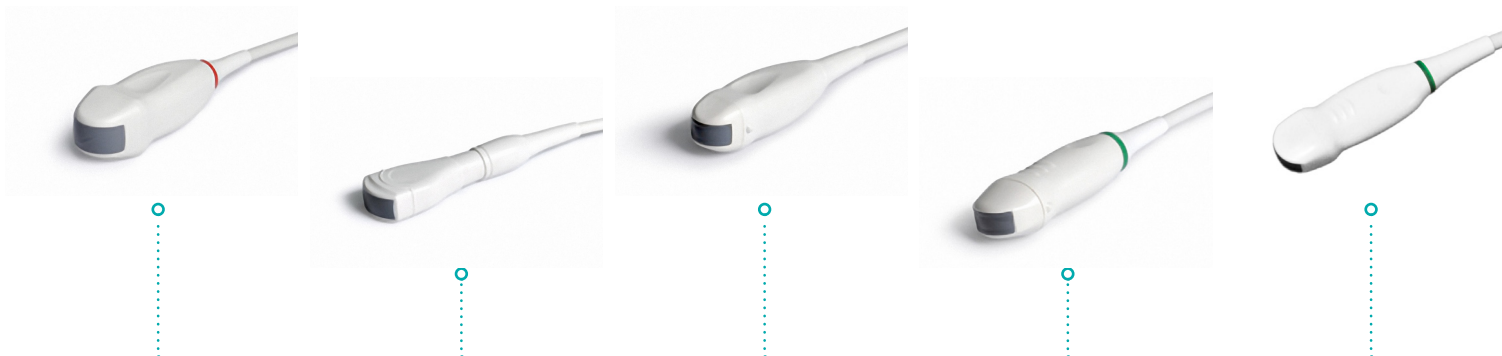


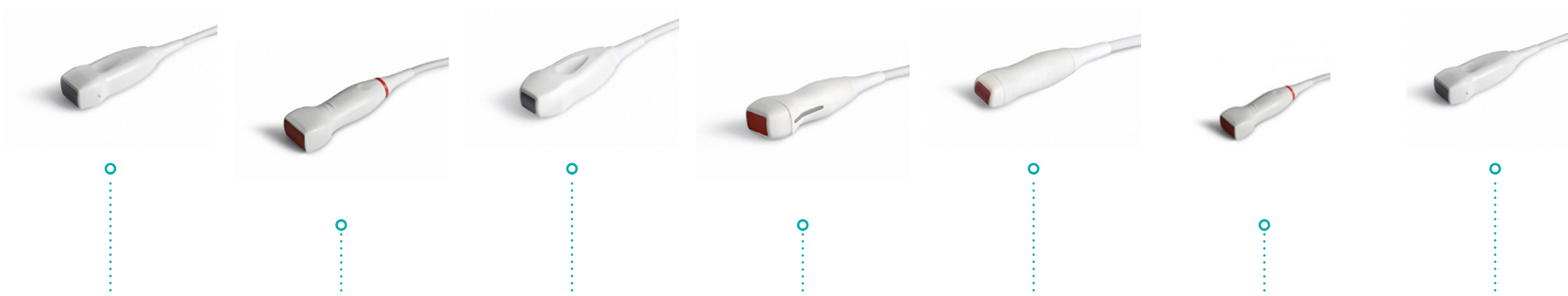
Code:	3C-A	C344	C351	C353	C354	C362	C542	C543
Application	Abdomen, Obstetrics, Gynaecology, Urology	Abdomen, Obstetrics, Gyneacology, Urology	Abdomen, Obstetrics, Gynaecology, Urology	Abdomen, Obstetrics, Gynaecology, Urology	Abdomen, Obstetrics, Gynaecology	Abdomen, Obstetrics, Gynaecology, Urology	Abdomen, Urology, Paediatrics	Abdomen, Obstetrics, Gynaecology, Urology, Paediatrics
Center Frequency	3.2MHz	3.5MHz	3.5MHz	3.5MHz	3.5MHz	3.5MHz	5.0MHz	5.0MHz
Display Frequency	1.0 - 7.0MHz	2.0 - 6.8MHz	2.0 - 6.8MHz	2.0 - 6.8MHz	2.0 - 6.8MHz	2.0 - 5.5MHz	3.0 - 11.0MHz	3.0 - 8.0MHz
FOV	70°	70°	86°	70°	70°	70°	60°	83°
Elements	128	128	128	192	128	192	128	120
Radius / Curvature	50mm	40mm	50mm	55mm	50mm	60mm	40mm	40mm
Image Depth	4 - 400mm	3 - 240mm	2 - 240mm	3 - 240mm	3 - 240mm	3 - 240mm	3 - 240mm	2 - 120mm
Biopsy Guide	Available	Available	Available	Available	Available	Available	No	Available
Footprint (LxW)	55 x 14mm	58 x 15mm	84 x 18mm	71 x 18mm	80 x 18mm	80 x 17mm	65 x 15mm	65 x 15mm
Unit Compatibility	X5, S9	S2, S8	A6	S9	S9	S8, S9	S8, S9	A6
Special features	THI compatible	-	-	THI compatible	-	-	-	-



Code:	10L1	L741	L742	L743	L745	L752(HD)
Application	MSK, Small Parts, Nerve, Vascular	MSK, Small Parts, Nerve, Vascular	MSK, Small Parts, Nerve, Vascular	MSK, Small Parts, Nerve, Vascular	MSK, Small Parts, Nerve, Vascular	MSK, Small Parts, Vascular
Center Frequency	8.5MHz	7.5MHz	8.0MHz	7.5MHz	7.5MHz	8.0MHz
Display Frequency	4.0 - 15.0MHz	4.0 - 16.0MHz	4.0 - 16.0MHz	4.0 - 16.0MHz	5.0 - 12.0MHz	4.0 - 16.0MHz
FOV	36mm	46mm	38mm	46mm	46mm	52mm
Elements	128	128	192	192	128	256
Radius / Curvature	N/A	N/A	N/A	N/A	N/A	N/A
Image Depth	2 - 90mm	2 - 90mm	2 - 100mm	2 - 90mm	2 - 90mm	2 - 100mm
Biopsy Guide	Available	Available	Available	Available	Available	Available
Footprint (LxW)	43 x 10mm	53 x 10mm	42 x 10mm	53 x 10mm	50 x 10mm	55 x 10mm
Unit Compatibility	S6, S8, S9	S2, X5, S8,	S8, S9	S8, S9	A6	S8, S9



Code:	C312	C322	C611	C612	C613
Application	Abdomen, Cardiac, Urology	Abdominocentesis, Urology	Abdomen, Cardiac, Urology, Paediatrics	Abdomen, Cardiac, Urology, Paediatrics	Cardiac, Paediatrics
Center Frequency	3.5MHz	3.5MHz	6.0MHz	6.5MHz	6.5MHz
Display Frequency	2.0 - 6.0MHz	2.0 - 6.8MHz	3.9 - 13.0MHz	4.0 - 9.0 MHz	3.9 - 13.0MHz
FOV	83°	70°	135°	96°	135°
Elements	72	72	128	72	128
Radius / Curvature	15mm	20mm	11mm	13mm	14mm
Image Depth	2 - 180mm	3 - 240mm	3 - 100mm	2 - 90mm	3 - 100mm
Biopsy Guide	No	Available	Available	No	Available
Footprint (LxW)	46 x 18mm	32 x 11mm	30 x 10mm	26 x 10mm	30 x 10mm
Unit Compatibility	A6	S8, S9	S2, S8, S9	A6	X5, S8, S9
Special Features	-	-	-	-	THI



Code:	2P1	3P1	5P1	5P2	8P1	4P-A	3P-A
Application	Cardiac, Transcranial, Abdomen	Cardiac, Transcranial, Abdomen	Cardiac, Transcranial	Pediatric cardiac, Transcranial	Pediatric cardiac, Transcranial	Cardiac, Transcranial, Abdomen	Cardiac, Transcranial, Abdomen
Center Frequency	2.5MHz	2.7MHz	5.0MHz	5.0MHz	7.5MHz	2.7MHz	2.5MHz
Display Frequency	1.0 - 6.0MHz	1.0 - 6.0 MHz	2.0 - 9.0MHz	2.0 - 9.0MHz	4.0 - 16.0MHz	1.0 - 6.0MHz	1.0 - 6.0MHz
FOV	90	90	90	90	90	90	90
Elements	64	80	64	96	96	80	64
Radius / Curvature	N/A	N/A	N/A	N/A	N/A	N/A	N/A
Image Depth	3 - 240mm	3 - 240mm	3 - 100mm	3 - 100mm	3 - 90mm	3 - 240mm	3 - 240mm
Biopsy Guide	Available	No	No	No	No	No	Available
Footprint (LxW)	24 x 16mm	25 x 16mm	20 x 14mm	20 x 14mm	20 x 14mm	25 x 16mm	24 x 16mm
Unit Compatibility	S8	S9	S8	S9	S9	S9	X5
Special features	-	-	-	-	THI	THI	-